

## External Surface Cleaning - Corrosion Control

Due to human and environmental factors, outdoor surfaces frequently need cleaning to remove dirt, greases, tannins and mould. Most of the outdoor cleaning products available today use to clean outdoor areas are chlorine or bleach based. These chemicals cause damage in the form of corrosion to metals including bolts, nails and steel re-enforcements, greatly shortening the life of balconies, decks and other outdoor areas.

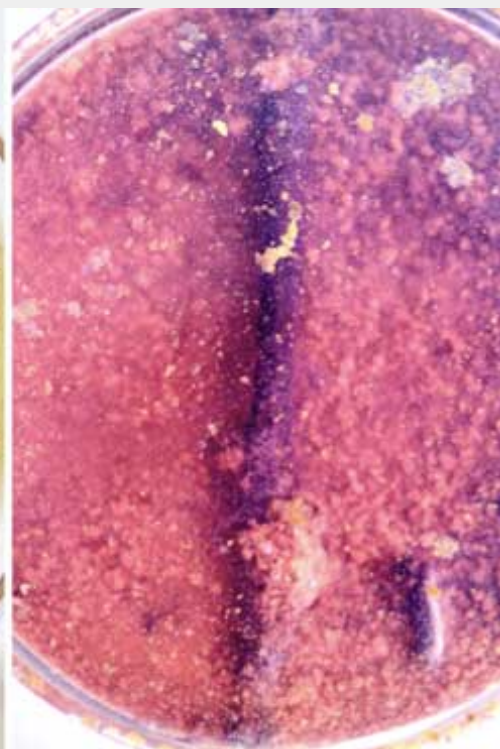
Fortunately SoSafe has developed a product which not only provides a solution to each of the common stains listed above, it does not cause corrosion of metals. Have a look below to see our laboratory corrosion test between SoSafe External Surface Revival and a competitors cleaner.

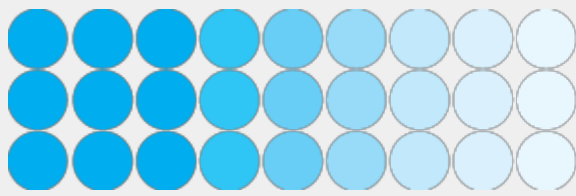
### Corrosion Testing

The majority of surface cleaners and mould removers on the market are typically chlorine or bleach based. Cleaners with this chemical base shorten the life of the surface fixtures. Below are a series of images illustrating the damage a typical cleaner causes to nails & screws in 72 hours in comparison to the SoSafe cleaning variant. Furthermore the SoSafe cleaner also provides up to a years protection against future mould growth.



The degradation on the nail & screw treated with a typical bleach based cleaner is severe, illustrating the damage caused by using the wrong product in application. In contrast the SoSafe treated nail & screw appear cleaner with no visual degradation.





**SoSafe**  
Specialty Products  
Cleaning products for all surfaces



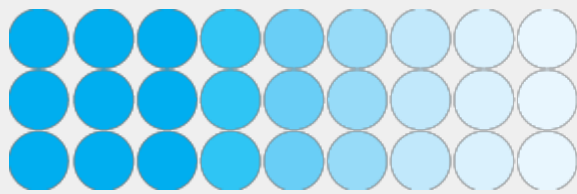
SoSafe (Left)



Typical Surface Cleaner (Right)



The close up illustrates the damage caused by a typical surface cleaner in 72 hours through oxidation.



**SoSafe**  
Specialty Products  
Cleaning products for all surfaces



SoSafe External Surface Revival product which is both safe for the environment and easy to use.